

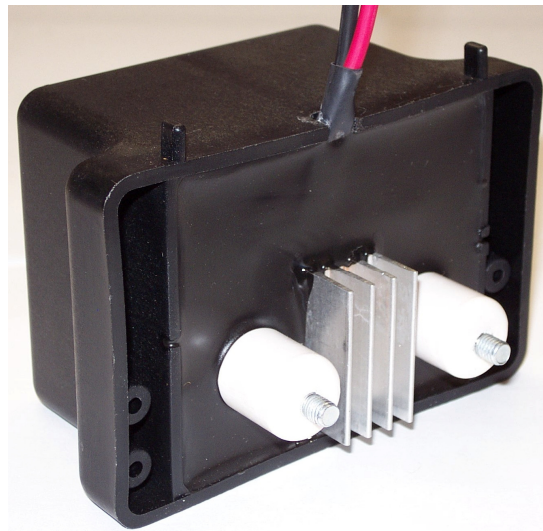
12V DC Igniter – Model# 5049

BUILT WITH SOLID CONSTRUCTION

The 12V DC Igniter is constructed using components and techniques that allow the 12V igniter to function in harsh environments (-20C to 60C)

MANUFACTURED IN THE US

We are proud to be the leading US manufacturer of the 12V DC Igniter. Custom Coils has been involved in manufacturing the 12V DC Igniter for almost 20 years.



Our igniters can be found in:

- ❖ Heated pressure washers
- ❖ Steam cleaning applications
- ❖ DC HVAC industries
- ❖ Tar buggies

FEATURES AND SPECIFICATIONS

Input Voltage Range: + 10.5V to +15V DC

Nominal Input: +12V DC @ 4.8 amps

Output: 20KV pk, 30 ma

Operating Temperature: -20C to 60C

Weight: 1.1LBs nominal

- ❖ Internal Reverse Polarity Protection
- ❖ Internal Transient Voltage Protection
- ❖ Internal Midpoint Ground
- ❖ Operates using airflow from standard oil burners

Other Design Elements:

- ❖ Input leads exit from the rear edge of the module for mounting ease
- ❖ Module mounts on rear and side hinged plates

Most industries that these portable devices go into are harsh environments, both high temperature and high moisture. Many are cleaning facilities that also use harsh chemicals, oils and corrosive fluids. The Custom Coils 12V DC Igniter has been designed to work in these harsh environments. The internal components of the igniter are protected by a Rynite shell and are completely encapsulated in a non-flammable epoxy. The Custom Coil igniter, model # 5049 is a rugged igniter that is versatile and can be used in many different applications.

