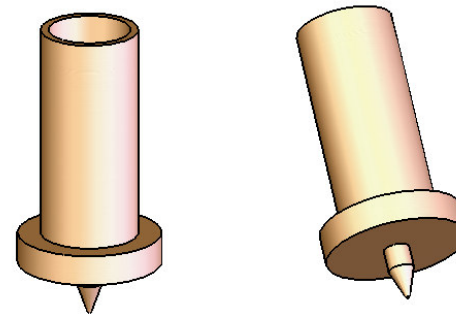
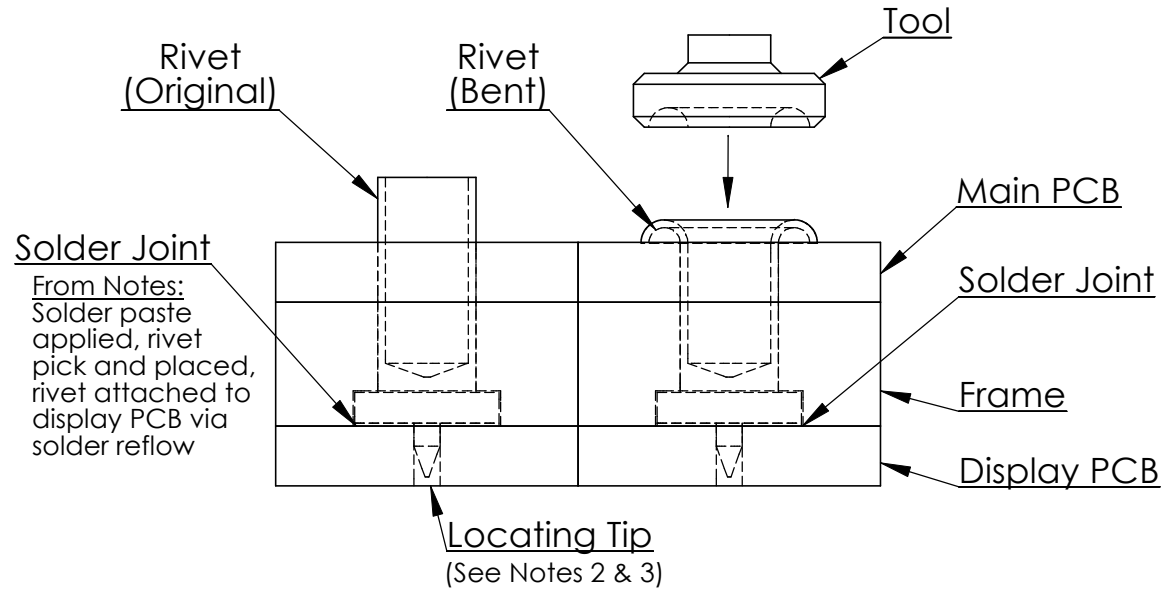
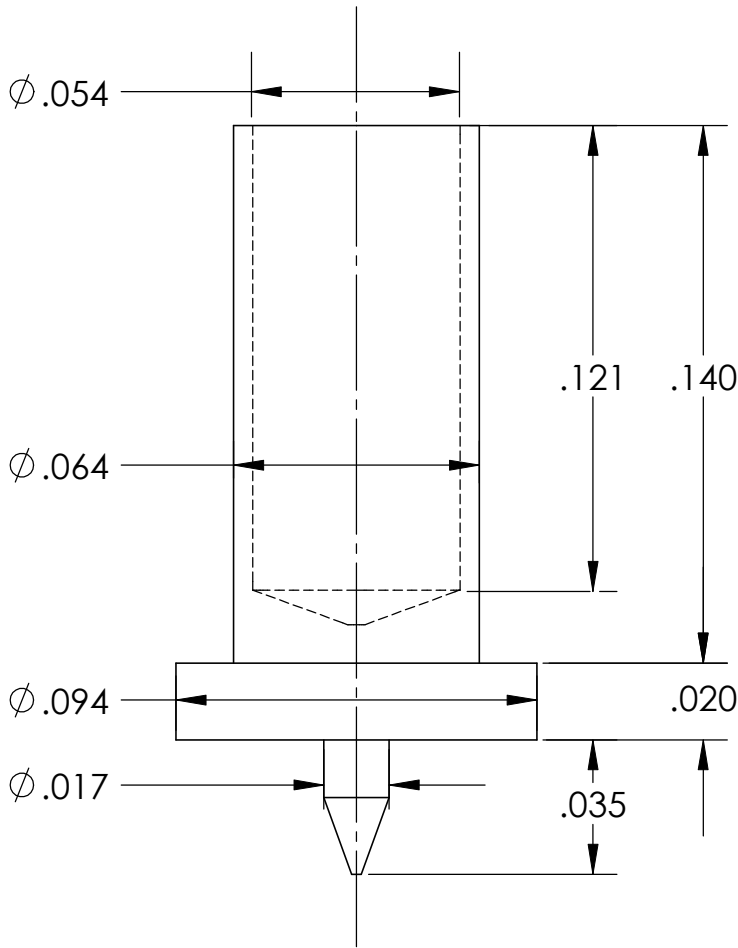


NOTES:

1. PCB RIVET PICK AND PLACED ONTO DISPLAY PCB
2. PCB RIVET CONICAL TIP FOR LOCATION
3. CLEARANCE HOLE (DISPLAY PCB) FOR POSITIONAL TOLERANCE ASSOCIATED WITH PICK AND PLACE
4. PCB RIVET SOLDERED ONTO BOARD VIA REFLOW
5. FRAME AND MAIN PCB SLIDE ONTO PCB RIVET
6. PCB RIVET DEFORMED USING A SPECIAL DIE TOOL
7. PCB RIVET MUST HOLD TOGETHER MAIN PCB, FRAME, AND DISPLAY PCB
8. ANNEAL PCB RIVET TO INCREASE MALIABILITY



TITLE: PCB RIVET

THE INFORMATION CONTAINED IN THIS DRAWING IS THE SOLE PROPERTY OF VOCERA COMMUNICATIONS. ANY REPRODUCTION IN PART OR AS A WHOLE WITHOUT THE WRITTEN PERMISSION OF VOCERA COMMUNICATIONS IS PROHIBITED.

PROPRIETARY AND CONFIDENTIAL

DESIGNER: ADAM WEGENER

DATE: 30 JULY 2008

DIMENSIONS: INCHES

MATERIAL: BRASS ALLOY 360

FINISH: TIN PLATING (RoHS)

(408) 568 - 0533

REV C

SCALE: 20:1

DO NOT SCALE DRAWING

SHEET 1 OF 1